

# Mana



TE RUNANGA O TE RARAWA

**Mana Tūpuna**

**Atua Māori  
Waka  
Tātai hono**

**Mana Whenua**

**Ahikā  
Taunaha  
Ringakaha  
Tuku**

**Mana Tangata**

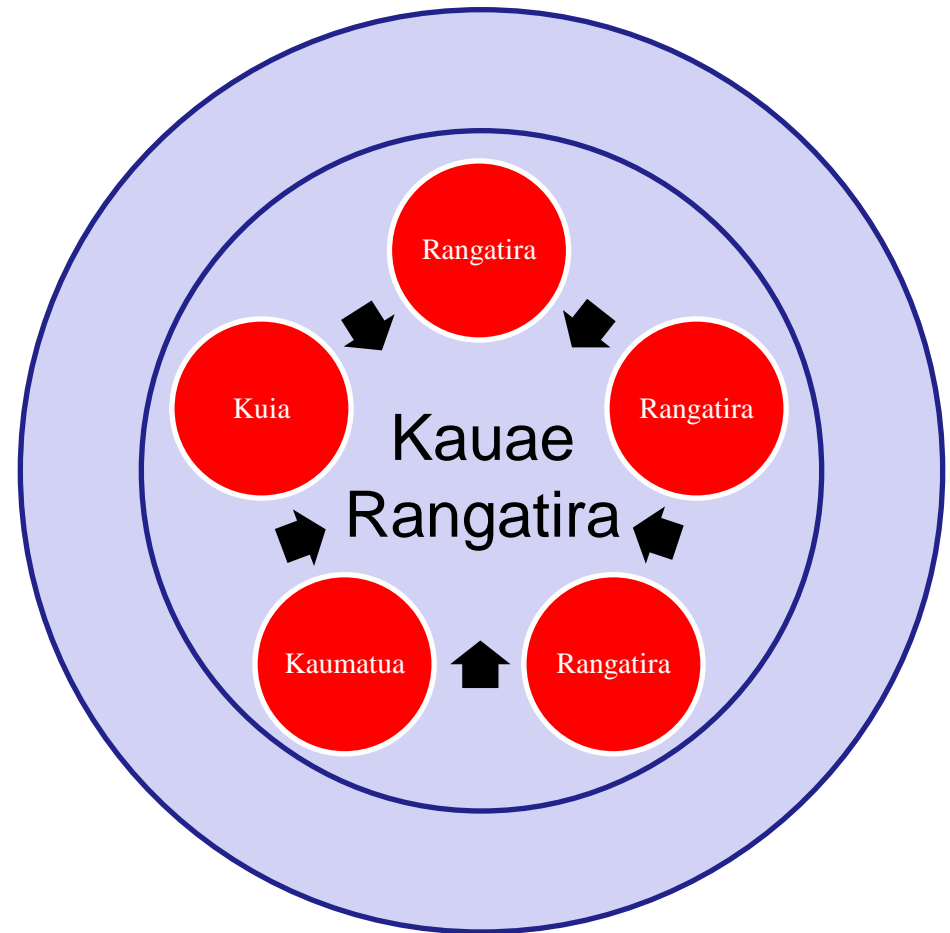
**Pūkenga  
Hoko  
Whanaungatanga**

# Hapū mana whenua



TE RUNANGA O TE RARAWA

- Reo / Tikanga / Mita
- Kaitiakitanga
- Marae Activities
- Hapū Structures
- Mana Motuhake
- Wāhi tapu
- Take whenua





- Kauae rangatira
- Confederation
- Regional focus
- Tauā
- Strengthening marae
- Building networks
- Support whānau / hapū / marae
- Political representation
- Iwi claim mandate / management
- Hapū equity / Economic security
- Planning for future generations
- Territorial authority

**Whānau**

**Hapū**

**Marae**

**Iwi**



## Whānau

- Established MIO
- Rāhui takutaimoana
- Support iwi action
- Business investments
- Provide social services  
(Health, Education, Housing)

## Hapū

- Resource management
- Information dissemination / collation
- Engage hapū and marae komiti kaitiaki
- Research programme  
(Historical / contemporary)

## Marae

- Claim management
- Iwi strategic planning

## Iwi

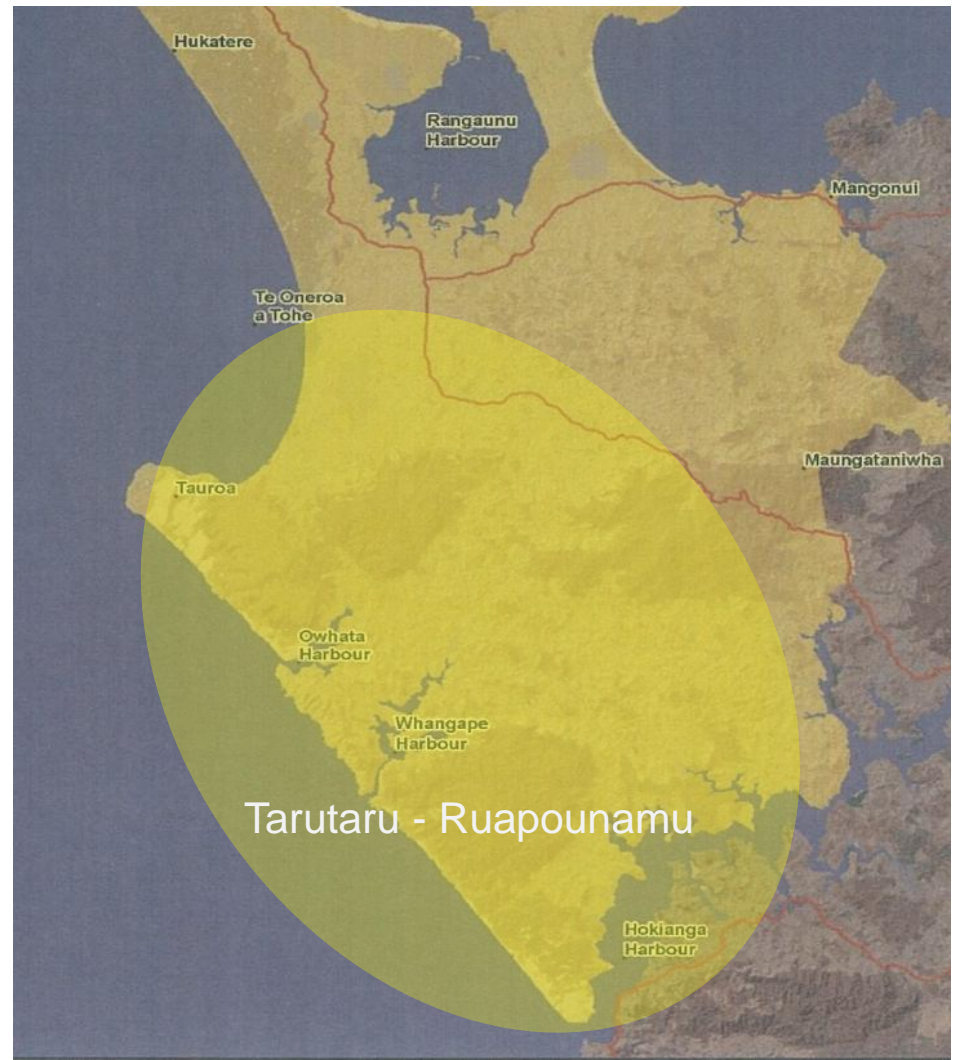
# Tarutaru - Ruapounamu



TE RUNANGA O TE RARAWA

1. Pakurakura
2. Te Tungutu
3. Ngamotu
4. Kahi
5. Manihi
6. Kahuwhakarewa
7. Moria

Mid 1700's



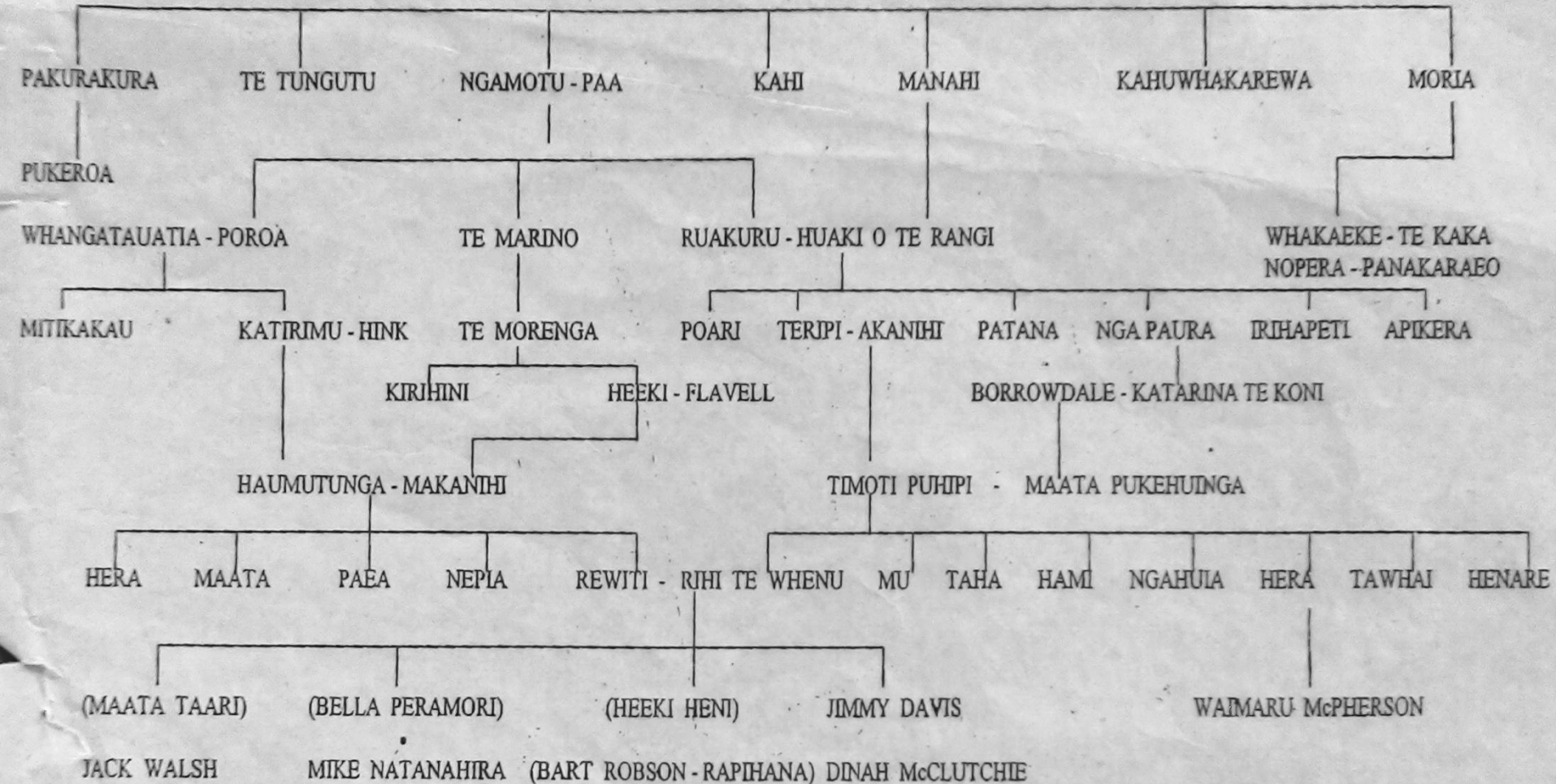


# Tarutaru - Ruapounamu



TE RUNANGA O TE RARAWA

## TARUTARU - RUAPOUNAMU

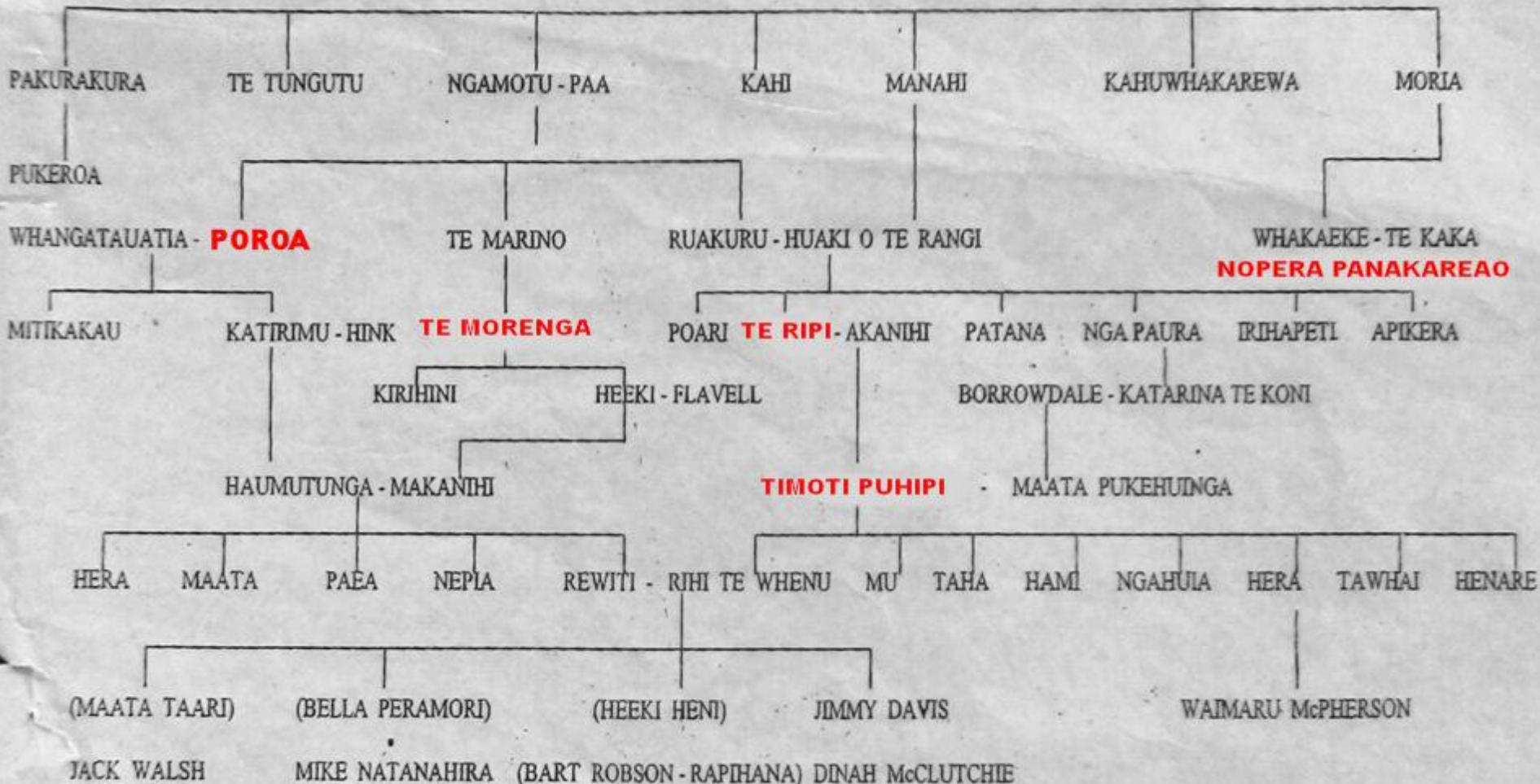


# Tarutaru - Ruapounamu



TE RUNANGA O TE RARAWA

## TARUTARU - RUAPOUNAMU



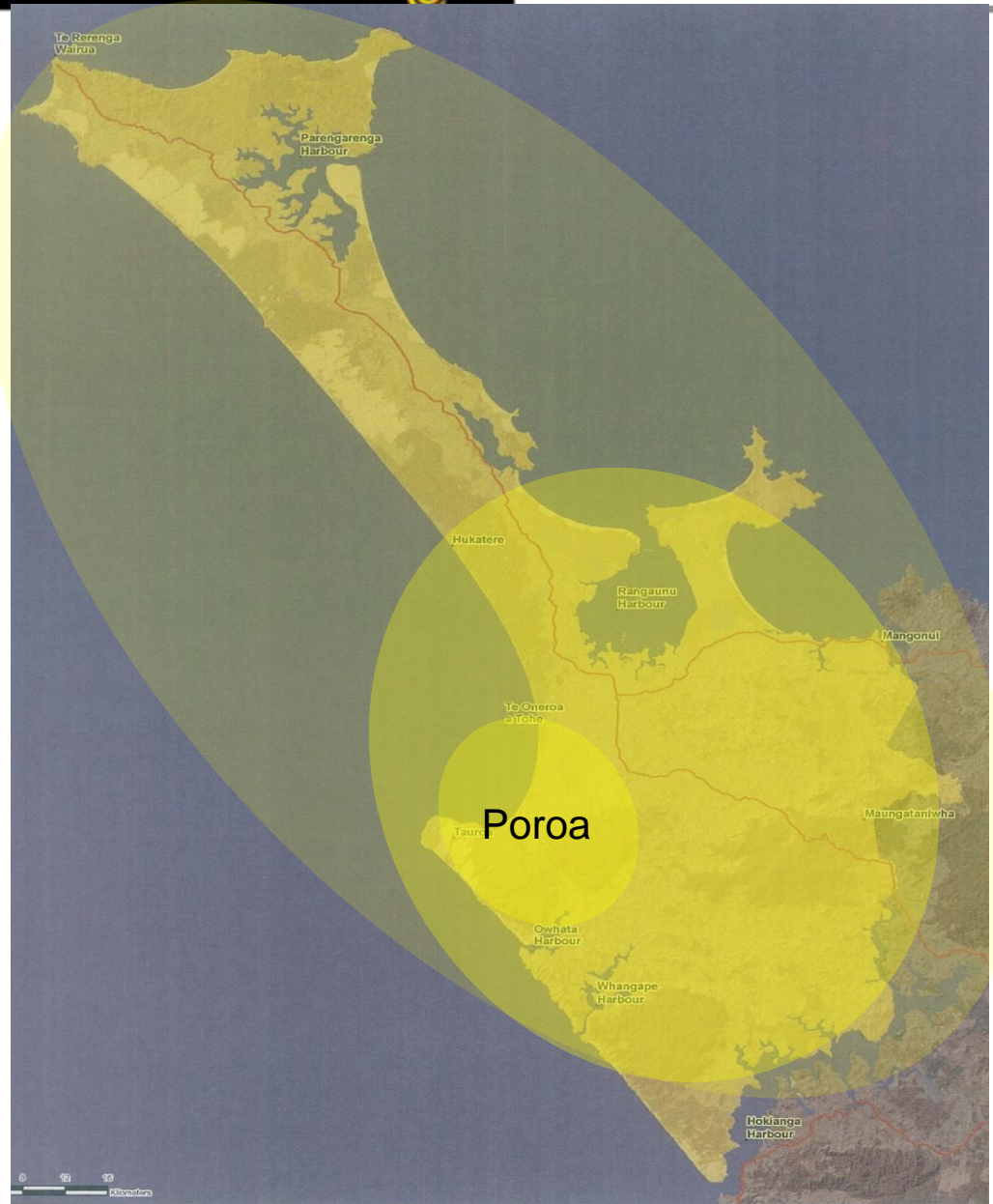


# Te Mana o Poroa



TE RUNANGA O TE RARAWA

Early 1800's





# Extended area of interest



TE RUNANGA O TE RARAWA

1850 - 1900s



# Core area of interest



TE RUNANGA O TE RARAWA

2012





# Rangatiratanga ki te Tonga



TE RUNANGA O TE RARAWA

## Hapū

Te Tāwhiu  
Ngāti Ruanui  
Patutoka  
Taomāui  
Ngāti Korohinga  
Ngāti Kaha  
Te Hokokeha  
Ngāti Manawa  
Ngāti Te Reinga  
Whānaupapa  
Kaingamata  
Tahaawai  
Whanaumaii  
Te Ihutai  
Ngāti Toro

Ngāti Hinerangi  
Kaitutae  
Ngāti Moetonga  
Porowerawera  
Ngāti Kaha  
Ngāti Waiora  
Parewhero  
Ngāi Tupoto  
Ngāti Kairewa  
Waiariki  
Ngāti Kura  
Ngāti Temara  
Ngāti Here



# Rangatiratanga ki te Raki



TE RUNANGA O TE RARAWA

## Hapū

Te Uri o Hina  
Tahaawai  
Te Tahukai  
Ngāti Te Ao  
Te Ihutai





# Rangatiratanga ki te Rāwhiti



TE RUNANGA O TE RARAWA

## Hapū

Tahaawai  
Ngāti Te Ao  
Te Uri o Hina  
Te Tahukai  
Te Ihutai  
Ngāi Tupoto  
Te Uri o Te Aho  
Kohatu Taka  
Te Paatu





# Rangatiratanga ki te Hauauru



TE RUNANGA O TE RARAWA

## Hapū

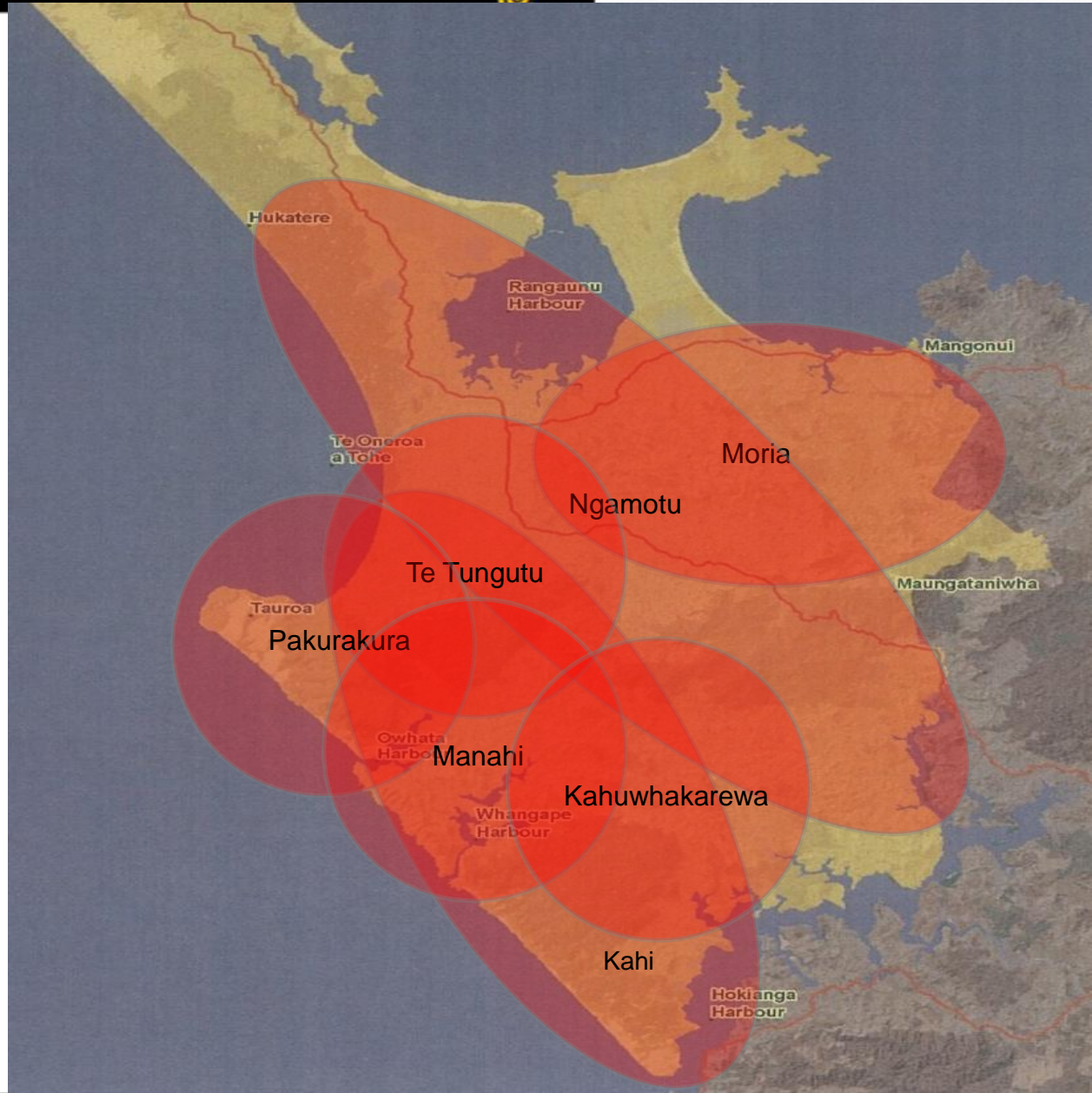
Te Uri o Hina  
Tahaawai  
Ngāti Te Ao  
Tahukai  
Parewhero  
Ngati Houpure  
Patukirikiri  
Ngati Moetonga  
Te Rokekaa  
Ngati Moroki  
Ngati Hine  
Patu Pinaki  
Te Uri o Tai  
Ngati Kuri / Wairupe  
Ngati Haua



# Ngā hekenga Rangatira



TE RUNANGA O TE RARAWA

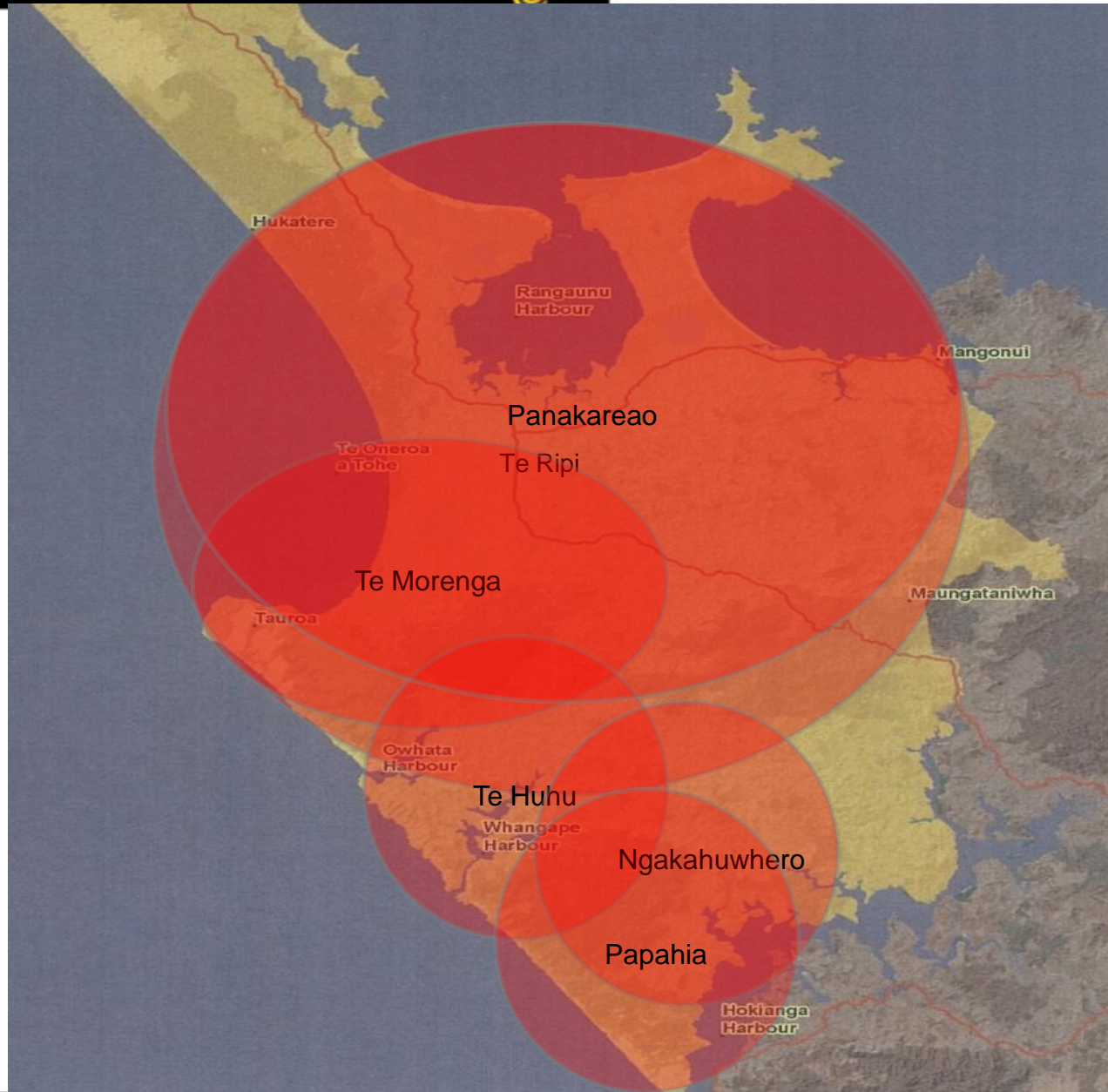




# He Whakaputanga



TE RUNANGA O TE RARAWA





# Summary

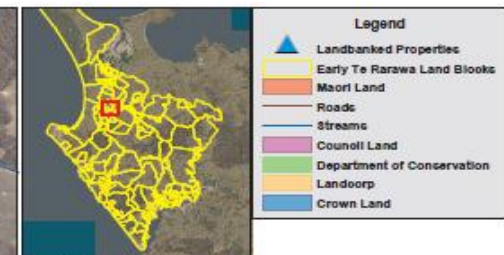
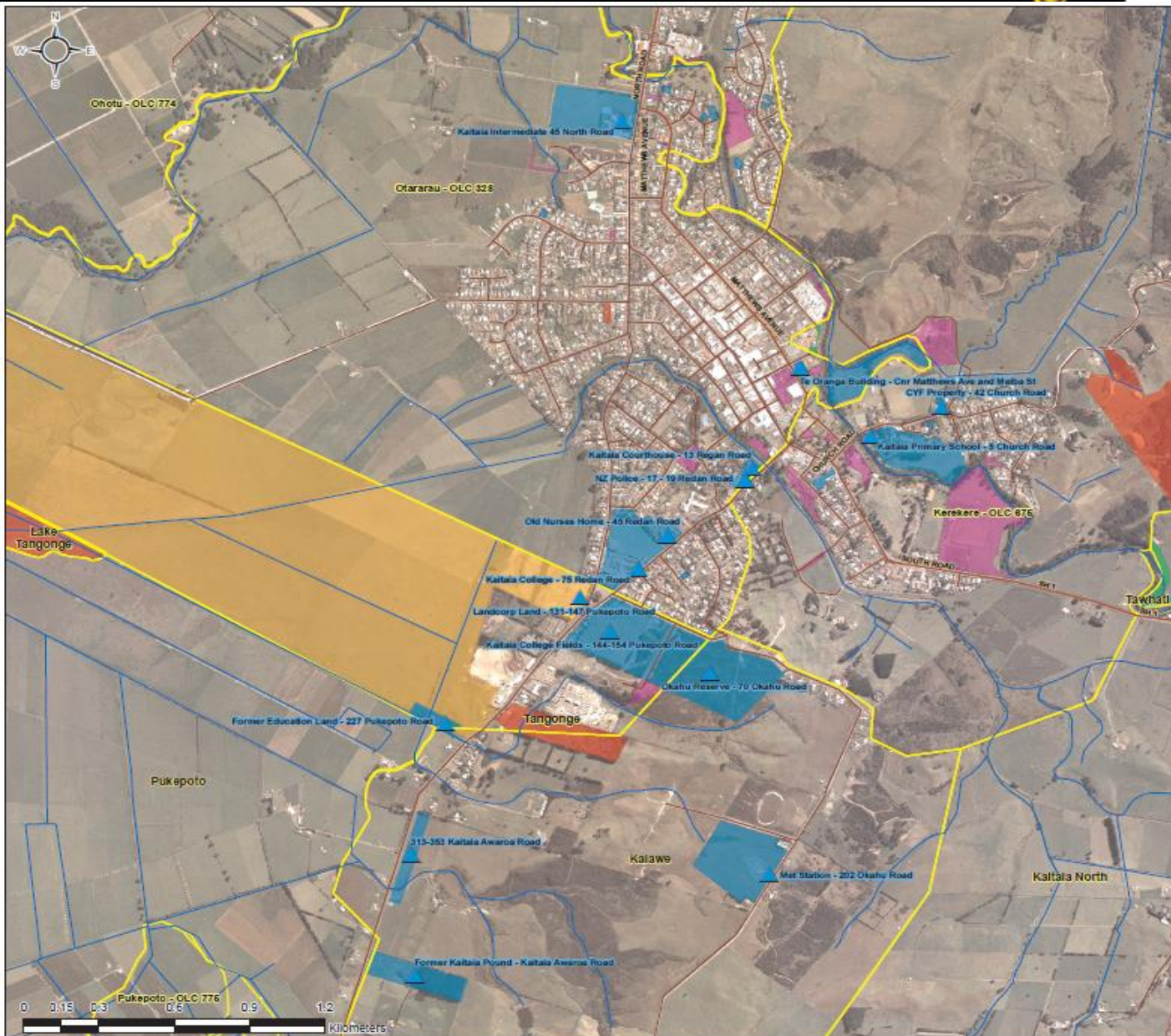


TE RUNANGA O TE RARAWA

- Resolving shared and overlapping interests
- Te Hiku Forum
  - Process
  - Agreements
  - Ngati Kahu withdrawal
- Kaitaia township lands
- Takahue Lands
- Tahawai hapu
- Te Rarawa boundaries with Te Paatu

# Kaitaia

TE RUNANGA O TE RARAWA



Te Rarawa areas of interest and sites of significance mapping project

## Kaitaia Township

Map Series: Complex Areas: Kaitaia Township showing Crown Redress Properties

Narrative

Map series: Complex areas	Kaitaia properties
	The township of Kaitaia is built upon several different blocks most of which were pre-Treaty old land claims. They include: <ul style="list-style-type: none"> <li>• Kerekere, Otatarau, Ohutu, Tangonge, Kalawe, Hauturu</li> </ul>
<b>Kerekere</b>	Pre-Treaty land transaction, OLC 675 (Church Missionary Society). Deeds signed by Nopera Panakareao, Tuperrī Te Waha, Tana, Hohepa Wasta, Rawiri Tiro, Hemi Kapa. Later Pukemiro and Whakatawene divided off.
<b>Otararau</b>	Pre-Treaty land transaction, OLC 328 (Matthews) Part referred to as Waioakai north of the township. Deed for Otatarau signed by Nopera Panakareao, Rawiri, Paratene, Haretanga, Hohepa Wiritane. Deed for Waioakai signed by Nopera Panakareao
<b>Ohutu</b>	Pre-Treaty land transaction, OLC 774 (Fuckley). Deeds signed Nopera Panakareao and 2 others.
<b>Tangonge</b>	Surplus from Otatarau block. Deed signed by Nopera Panakareao, Rawiri, Paratene, Haretanga, Hohepa Wiritane.
<b>Kalawe</b>	1859 sale. Deed signed by Puhipi Te Rewharewha and Waika Rangururu.
<b>Hauturu</b>	Pre Native Land Court transaction, 2 <sup>nd</sup> August 1862. Inalienable reserve from Mangateke purchase for the purpose of cultivation and occupation. Vested in 10 owners. Hohepa Foutama, Rauna Te Takanga, Hoani Kingi Te Hiko, Hopa Toomira, Te Rubene Te Wai, Hari Rewiri, Matu Te Tiri, Teira Ikaroa, Reihana Paora, Hau Mikara. Tupuna: Moenga Herehere, Te Uri o Rauru (Ihapu o Te Rarawa)
<b>References</b>	<p><b>Kaitaia</b>, Muritewhenua Land Report, Waitangi Tribunal, 1997, pp 60-61;</p> <p><b>Turtona Maori Deeds of Land Purchase</b>, North Island of NZ, Vol 1, 1877</p> <p><b>Otararau</b>, Muritewhenua Land Report, Waitangi Tribunal, 1997, pp 60-61; 225-62; Turtona Maori Deeds of Land Purchase, North Island of NZ, Vol 1, 1877.</p> <p><b>Ohutu</b>, Muritewhenua Land Report, Waitangi Tribunal, 1997, pp 60-61.</p> <p><b>Tangonge</b>, See Otatarau above.</p> <p><b>Kalawe</b>, Turtona Maori Deeds of Land Purchase, North Island of NZ, Vol 1, 1877</p> <p><b>Hauturu</b>, 1 NMB 32, 4 NMB pp 286 (succession), Muritewhenua Land Report, Waitangi Tribunal, 1997</p>

Properties	Locations
Kaitaia Primary	Kaitaia
Kaitaia Intermediate	Kaitaia
Kaitaia College	Kaitaia, Tangonge (fields)
Courthouse	Kaitaia
Police Station (RFR)	Kaitaia
Old Nurses Home	Kaitaia
Met Station	Kaitaia
Okahu reserve	Kaitaia, Tangonge
Cnr Matthews Ave/ Melba St	Kaitaia
42 Church Rd	Kaitaia
Old Pound, Kaitaia Awarua Rd	Kaitaia
227 Pukepoto Rd	Tangonge, Kaitaia
313-353 Kaitaia-Awarua Rd	Kaitaia

Created: October 2011  
for Te Runanga o Te Rarawa  
by Nathan Kennedy under  
contract to CIRT

Crown Land data - LINZ  
Early Block data - Te Rarawa  
Maori Land data - LINZ/1996  
Aerial Photography - Northland  
Regional Council



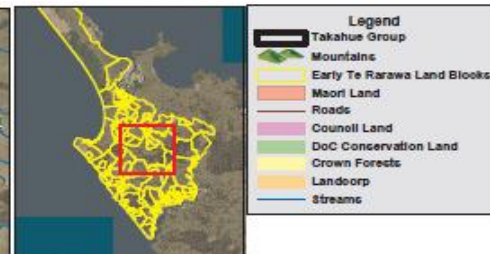
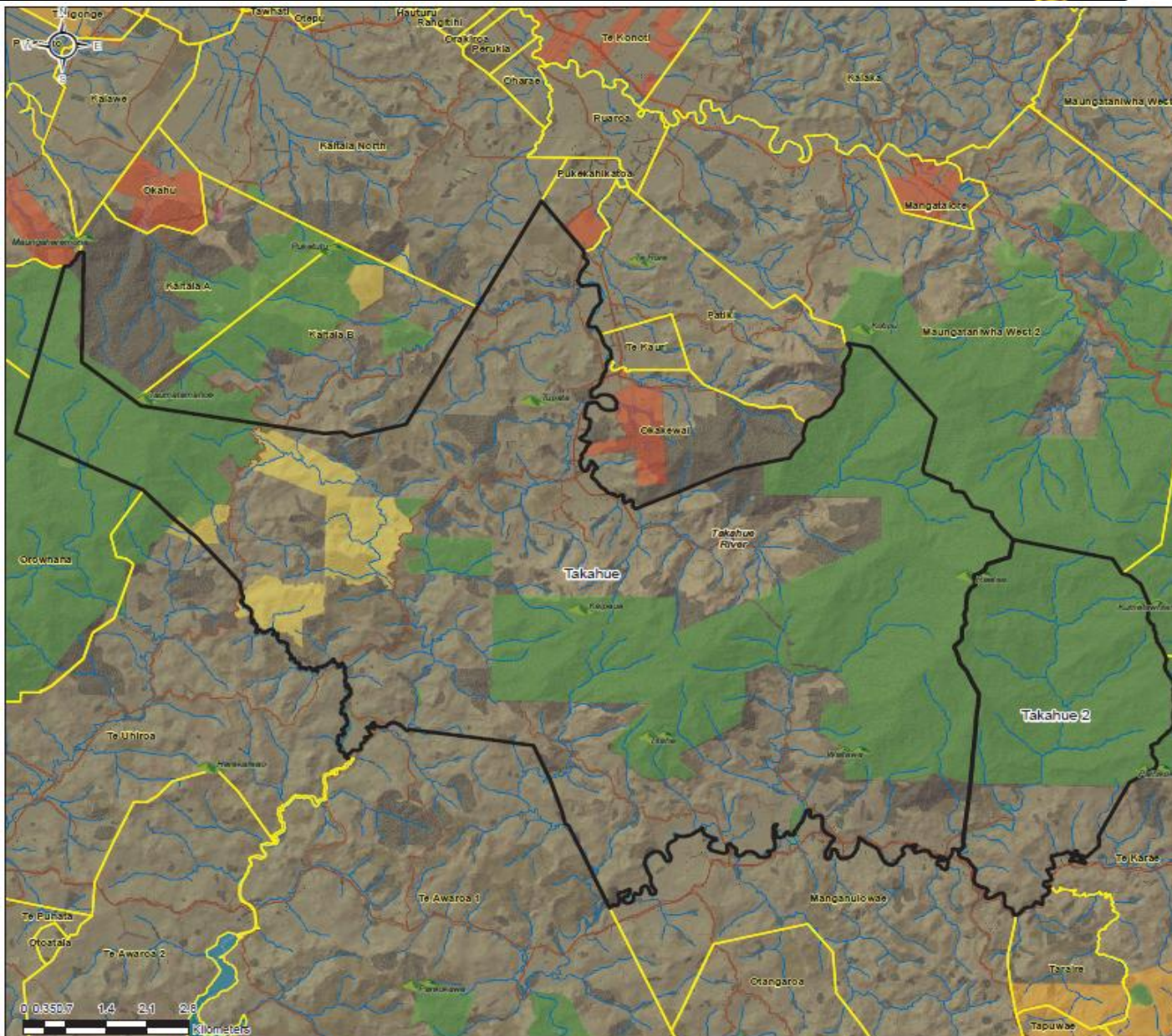
TE RUNANGA O TE RARAWA



# Takahue



TE RUNANGA O TE RARAWA



Te Rarawa areas of interest and sites of significance mapping project

## Takahue

Map Series: Papatupu Blocks: Takahue and Takahue 2

### Narrative

<b>Ingoa (Parent Block)</b>	Takahue
<b>Nga Marae</b>	
<b>Investigation dates/ Court Orders</b>	NLC April 30 <sup>th</sup> 1875
<b>Total Original Area (acres)</b>	28,527 acres Takahue 1: 24,122 acres Takahue 2: 4,405 acres
<b>Nga Tupuna</b>	Takahue 1: Taranga Takahue 2: Te Taitanga
<b>Nga Hapu</b>	Takahue 1: Te Uri o Hina, Tahawai Takahue 2: Ihuta, Pasuu
<b>Take</b>	Take tūpuna, ahikarua
<b>Ownership</b>	Takahue 1: Timoti Funiipi, Wi Tana Papahia, (Te Uri o Hina) Hone Harimana (Tahawai) Takahue 2: Hori Karaka Tawhiti, Te Tihata, (Te Ihuta) Himiona Te Waniora (Pasuu)
<b>Alienation issues</b>	Crown purchasing policies, Village Special Settlement Schemes discriminated against Maori.
<b>Significant Sites</b>	Maunga: Raetea, Titaha, Tupata, Waitawa, Kaipapa
<b>Tikanga: practices/controlling means of production</b>	
<b>Net Results</b>	Both blocks sold to the Crown in May 1875. Contains Takahue School site.
<b>References</b>	1 NMB 59-61
<b>Associated blocks</b>	Okakewai Te Kauri Patihi Pukekahikatoa

Created: October 2011  
for Te Runanga o Te Rarawa  
by Nathan Kennedy under  
contract to GFRIT

Crown Land data - LINZ  
Early Block data - Te Rarawa  
Maori Land data - LINZ/TPK  
Background Terrain - GeoGraphics Ltd  
Aerial Photography - Northland  
Regional Council

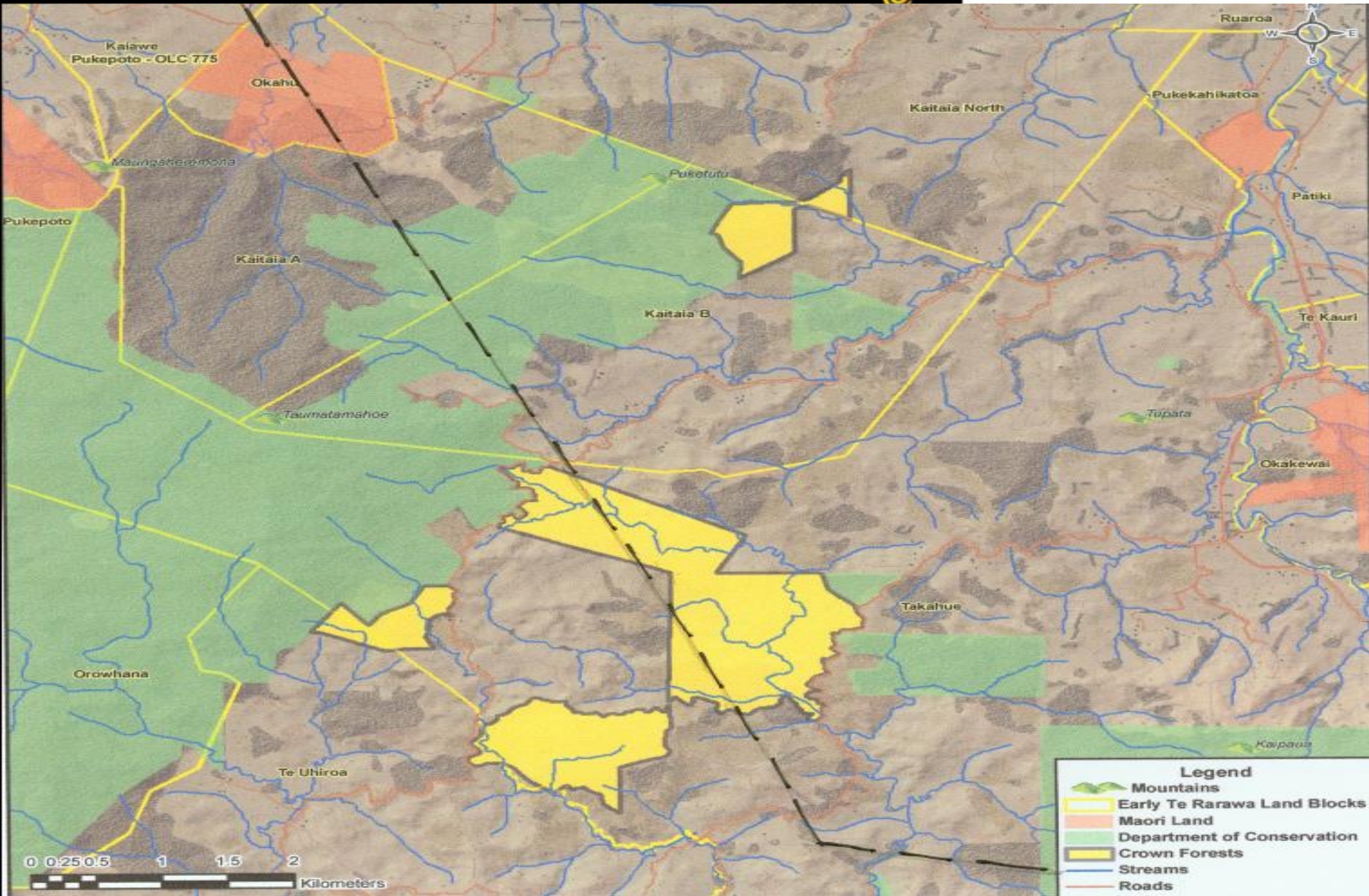




# Takahue Forest



TE RUNANGA O TE RARAWA



- Legend**
- Mountains
  - Early Te Rarawa Land Blocks
  - Maori Land
  - Department of Conservation
  - Crown Forests
  - Streams
  - Roads

0 0.25 0.5 1 1.5 2 Kilometers

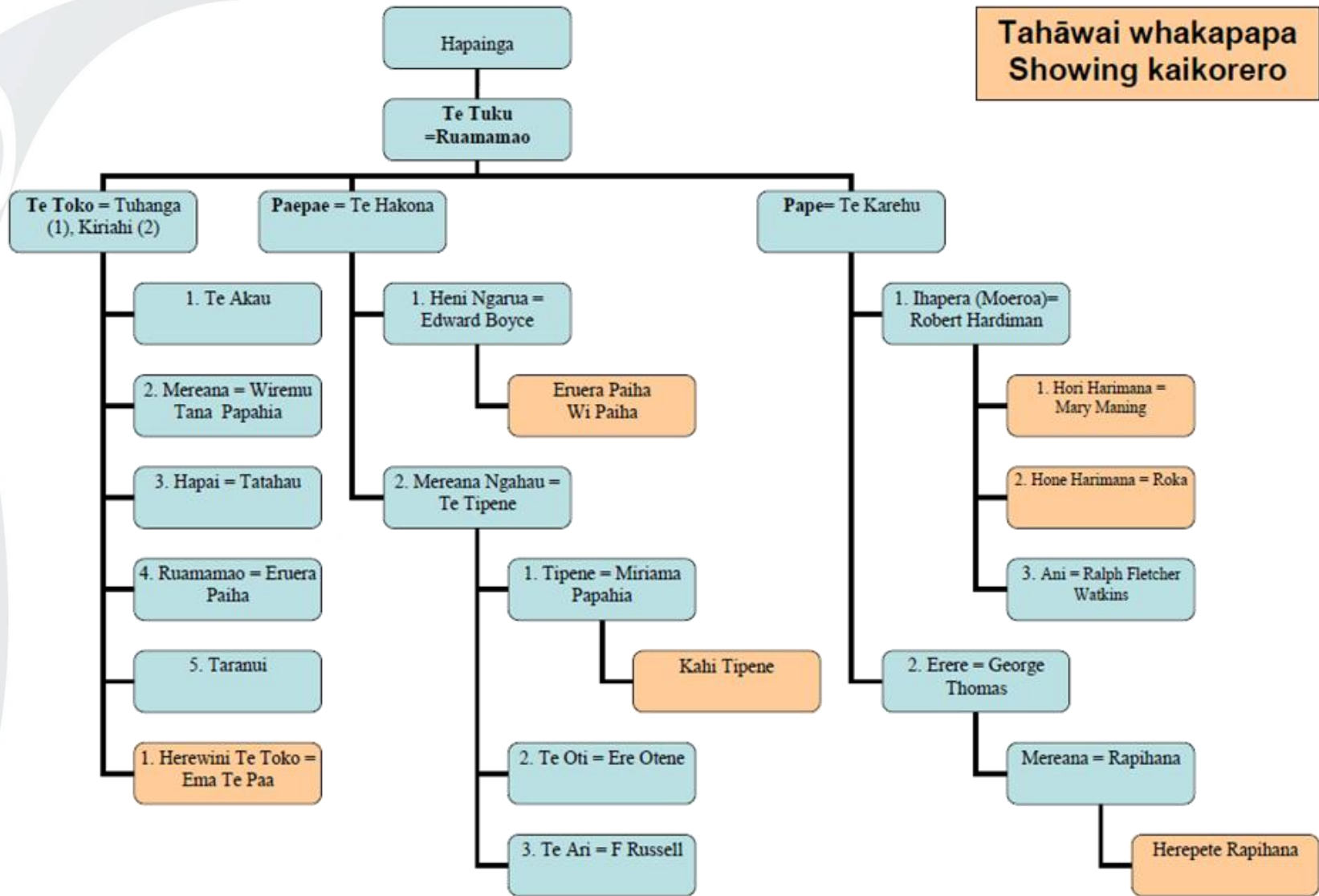


# Tahawai Kaikorero



TE RUNANGA O TE RARAWA

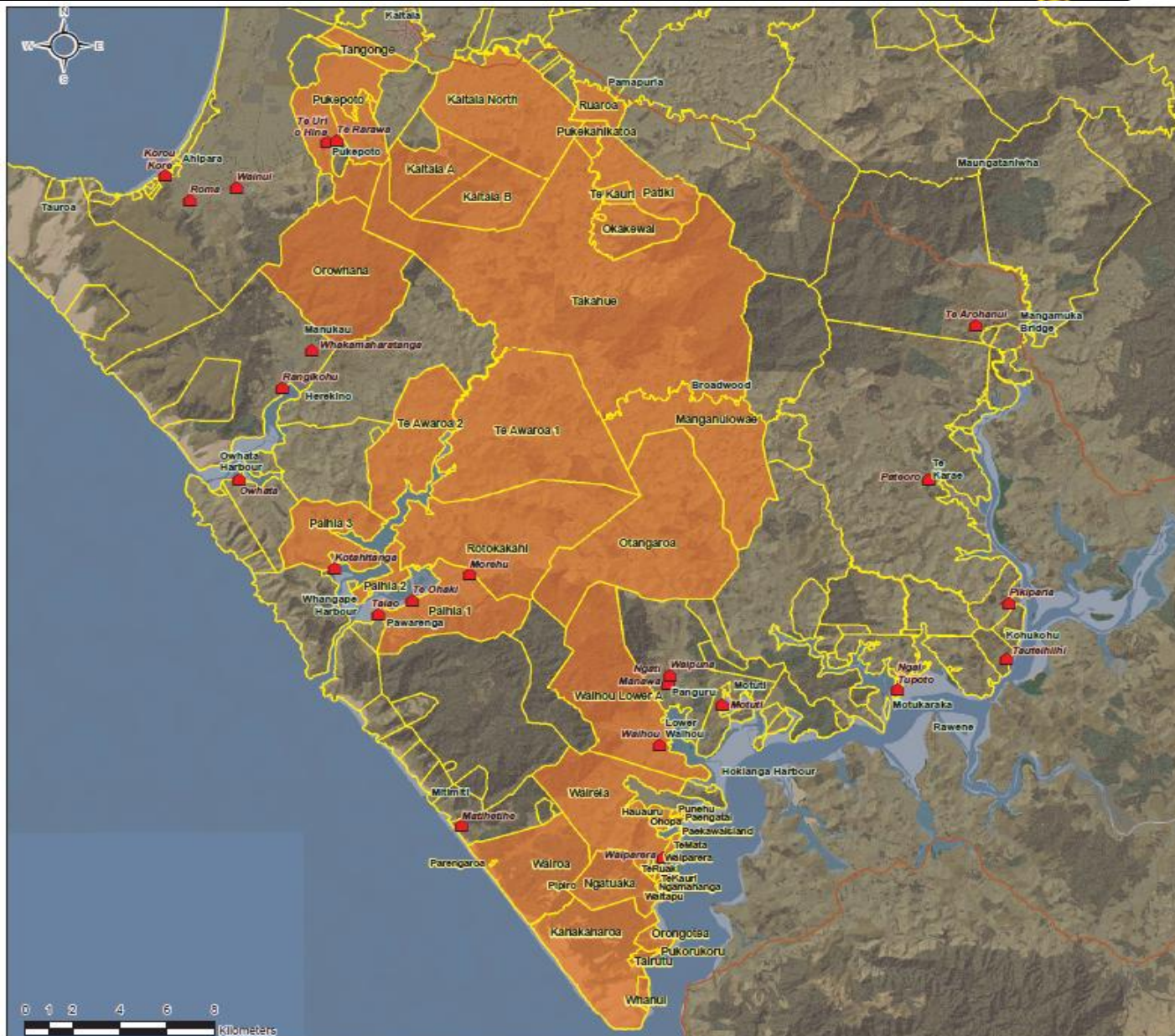
Tahāwai whakapapa  
Showing kaikorero



# Tahawai



TE RUNANGA O TE RARAWA



Te Rarawa areas of interest and sites of significance mapping project

**Legend**

- Marae
- Highways
- Early Land Blocks
- Tahawai hapu Interests

## Interests of Tahawai hapu of Te Rarawa

### Narrative

Tahawai is a hapu of Te Rarawa and its interests can be identified from Pukepoto across to Hokitanga. In many cases these interests were shared with other Te Rarawa hapu. In a small number of cases lands were split between Te Paatu and Tahawai. These included Pukekahikatoa, Ruarua and Patiki blocks. The descendants of the Tahawai representatives identified by the Native Land Court are affiliated to Te Rarawa marae today.

Created: August 2011  
for Te Runanga o Te Rarawa

Block data - Te Runanga o Te Rarawa  
Terrain Image - Geographics Ltd  
Highway data - LINZ  
Hydrology - LINZ

Map Production - Nathan Kennedy

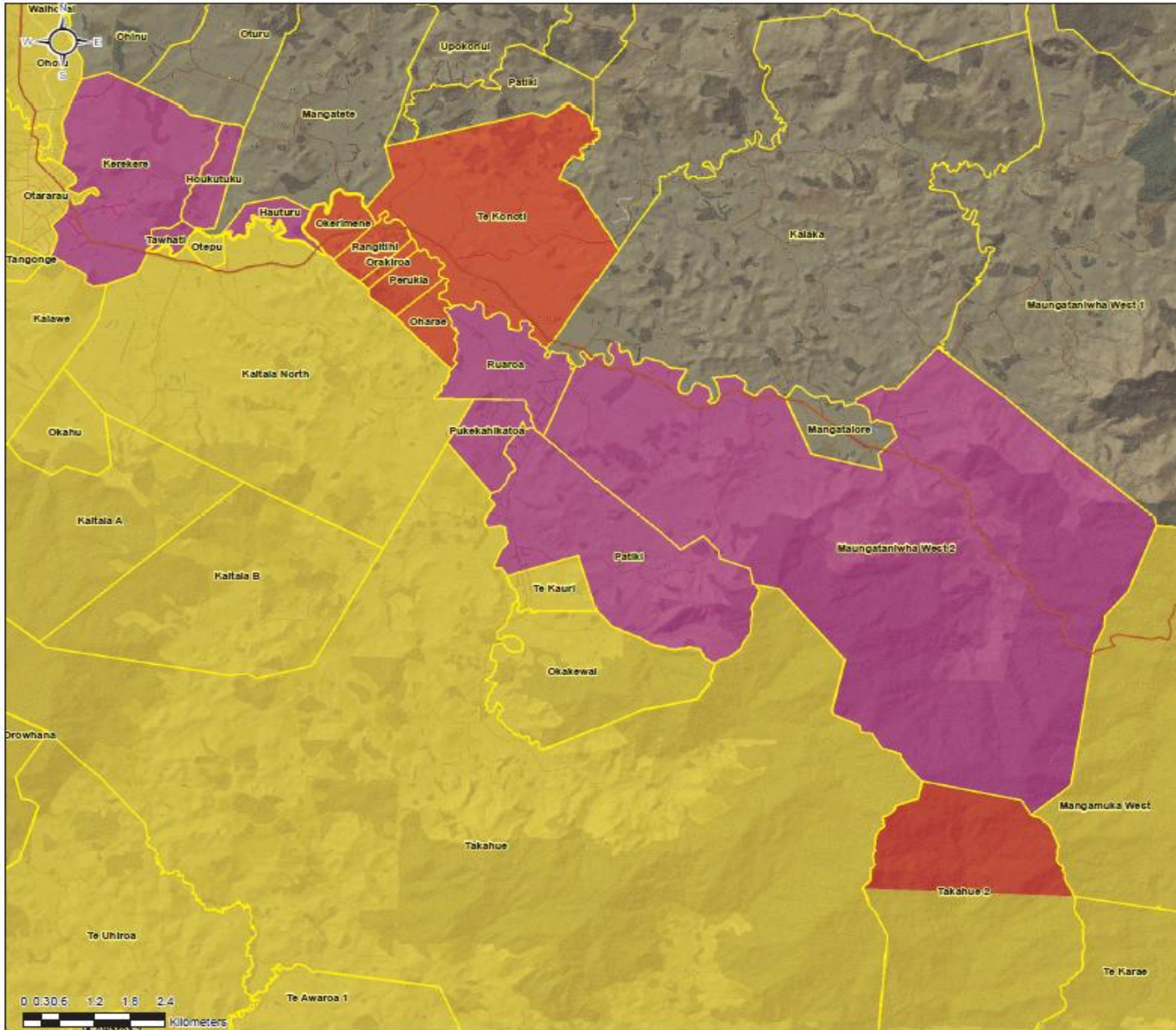




# Te Rarawa and Te Paatu Interests



TE RUNANGA O TE RARAWA



**Legend**

- Highways
- Early Land Blocks
- Te Rarawa and Paatu Interests
- Paatu
- Te Rarawa/Paatu
- Te Rarawa

Te Rarawa areas of interest and sites of significance mapping project

## Te Rarawa and Paatu Interests

### Narrative

The earliest land transactions in Te Hiku o Te Ika before the signing of Te Tiriti o Waitangi involved Te Rarawa lands in and around Kaitiaki. These transactions were regarded as tuku whenua and included the Kerekeru, Otaraia, and Tangonge blocks. They were led by Te Rarawa rangatira Panakareao.

In the 19<sup>th</sup> century Te Paatu was referred to as a hapu of Te Rarawa. The role of Te Paatu and other Te Rarawa hapu were contested when the Native Land Court began determining ownership of the Kaitiaki and Takahue lands.

In 1867 a Te Rarawa chief Tamaho Te Huhu held hui with the people of Kaitiaki and the Victoria Valley to discuss their land claims. Despite some opposition it was generally accepted that Tamaho had established a claim to the area south east of Kaitiaki. He later commissioned a survey of the land, which became the Kaitiaki block, but this precipitated a boundary dispute between Te Rarawa of the Ahipara, Herekino and Whangape districts, and Te Paatu.

When the survey reached a certain point it was challenged by Te Paatu who sought to halt it proceeding any further. The dispute escalated with both sides amassing war parties in the area.

Resident Magistrate White and his two Assessors from the Native Land Court mediated between the opposing parties and a boundary for the survey line was eventually agreed with the northern boundary of the Kaitiaki block from Okerimene to Oharae providing a dividing line between Te Rarawa and Paatu.

In the Takahue claims all of Takahue block was awarded to Tahawai and Te Uhi o Hina, with Takahue 2 was divided between Ihutai and Te Paatu. The Maungataniwha West 2, Patiki, Pukekahikatoa, and Ruaroa blocks included both Te Paatu and other Te Rarawa hapu interests. Okakewai was awarded to Te Uhi o Hina, and Tahawai, and Te Kauri was awarded to Te Uhi o Hina, Tahawai, Ngati Te Ao, and Te Takakai, all hapu of Te Rarawa.

In the Mangamuka West claim the Court determined that the summit of Maungataniwha was the natural boundary between Te Paatu and Te Rarawa.

Created: August 2011  
for Te Runanga o Te Rarawa

Block data - Te Runanga o Te Rarawa  
Terrain Image - Geographics Ltd  
Highway data - LINZ  
Hydrology - LINZ

Map Production - Nathan Kennedy





# Old Land Claims



TE RUNANGA O TE RARAWA

